

Source: Esri, DigitalGlobe, GeoEye, Earthstar Geographics, CNES/Airbus DS, USDA, USGS, AeroGRID, IGN, and the GIS User Community

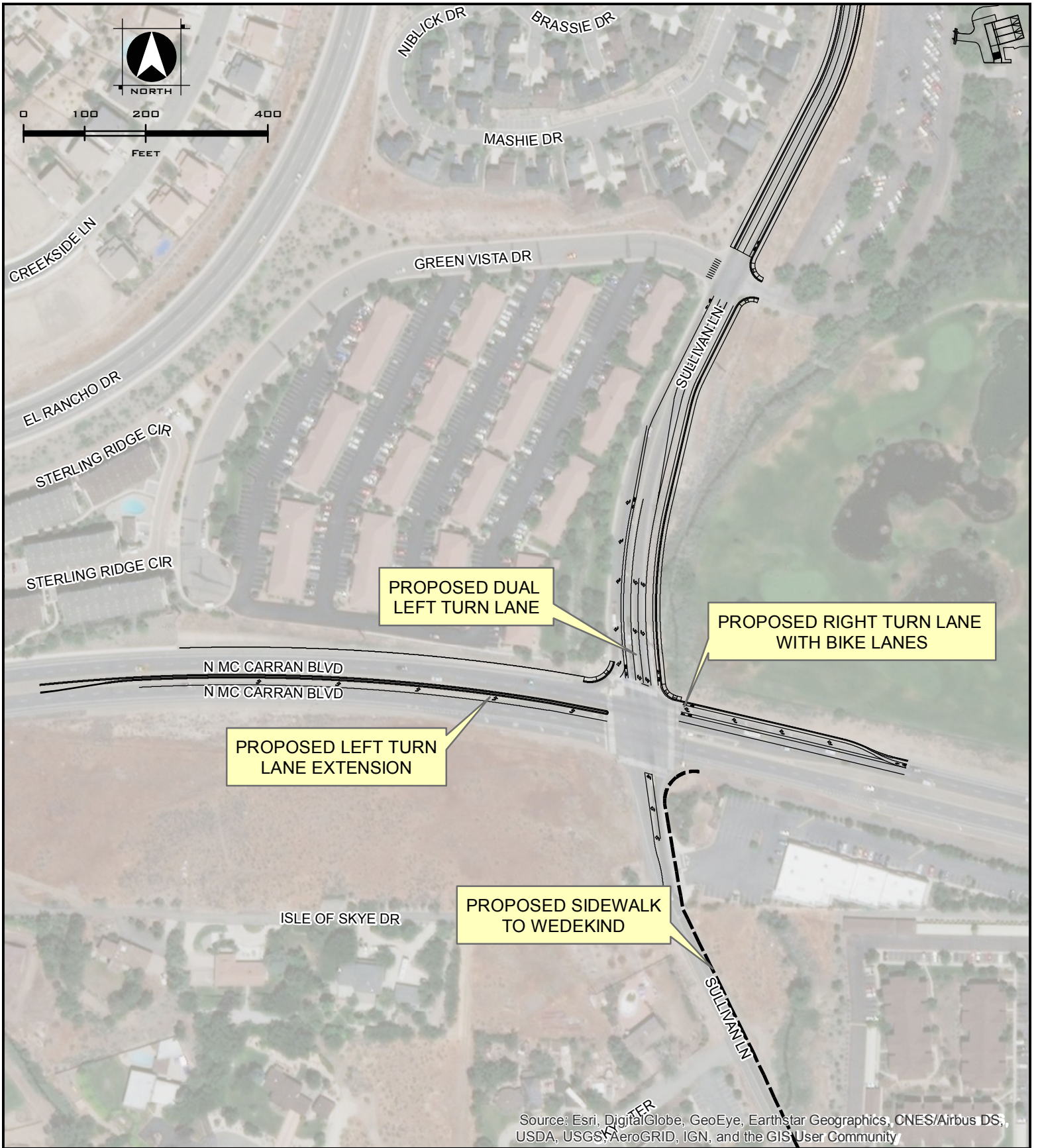


Washoe County School District
Every Child, By Name And Face, To GraduationSM

OVERALL IMPROVEMENTS
HIGH SCHOOL AT WILDCREEK
RENO, NV
MARCH, 2019



WOOD RODGERS
BUILDING RELATIONSHIPS ONE PROJECT AT A TIME
1361 Corporate Boulevard Tel: 775.823.4068
Reno, NV 89502 Fax: 775.823.4066

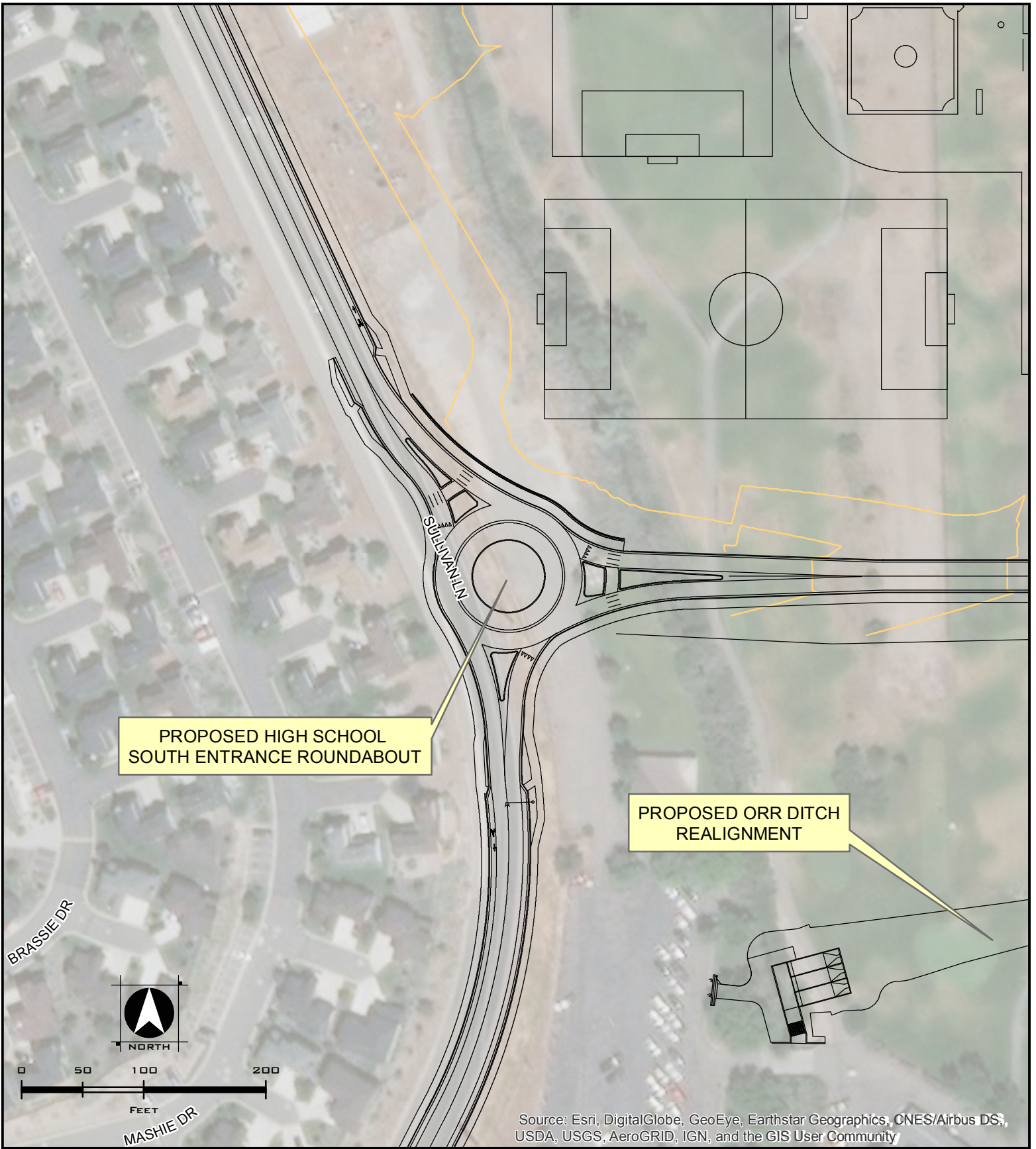


Source: Esri, DigitalGlobe, GeoEye, Earthstar Geographics, CNES/Airbus DS, USDA, USGS, AeroGRID, IGN, and the GIS User Community



LOCATION: A
 HIGH SCHOOL AT WILDCREEK
 RENO, NV
 MARCH, 2019





Washoe County School District
Every Child, By Name And Face, To Graduation™

LOCATION: B
HIGH SCHOOL AT WILDCREEK
RENO, NV
MARCH, 2019



WOOD RODGERS
BUILDING RELATIONSHIPS ONE PROJECT AT A TIME
1361 Corporate Boulevard Tel: 775.823.4068
Reno, NV 89502 Fax: 775.823.4066



LOCATION: C, D
 HIGH SCHOOL AT WILDCREEK
 RENO, NV
 MARCH, 2019





Esri, HERE, DeLorme, MapmyIndia, © OpenStreetMap contributors, and the GIS user community, Source: Esri, DigitalGlobe, GeoEye, Earthstar Geographics, CNES/Airbus DS, USDA, USGS, AeroGRID, IGN, and the GIS User Community



LOCATION: E
HIGH SCHOOL AT WILDCREEK
RENO, NV
MARCH, 2019

